

**LEGEND**

- Direction of Travel
- Sign
- North Arrow
- Tubular marker
- Certified TCP
- HLWD

Figure # 7.8 in the TCMWR 2015 Edition  
Single Lane Alternating

This Traffic Control Plan is designed to accommodate patch work at 6840 School Ln through the Collins intersection on School Ln 25m South. Work to commence Friday, Aug. 17th, 2018 and is expected to be completed in one day, however permit will be requested for a week.

Work hours shall be from 7:00 am - 5:00 pm

All signs and traffic devices shall be placed in compliance with WCB and the TCMWR



Drawing  
NTS

Drawing No.  
LP-School Ln - 02

School Ln

Collins Dr

Centennial Dr

40m

40m

40m

50-75m

5m

5m

5m

25-35m

40m

40m

40m

SINGLE LANE TRAFFIC

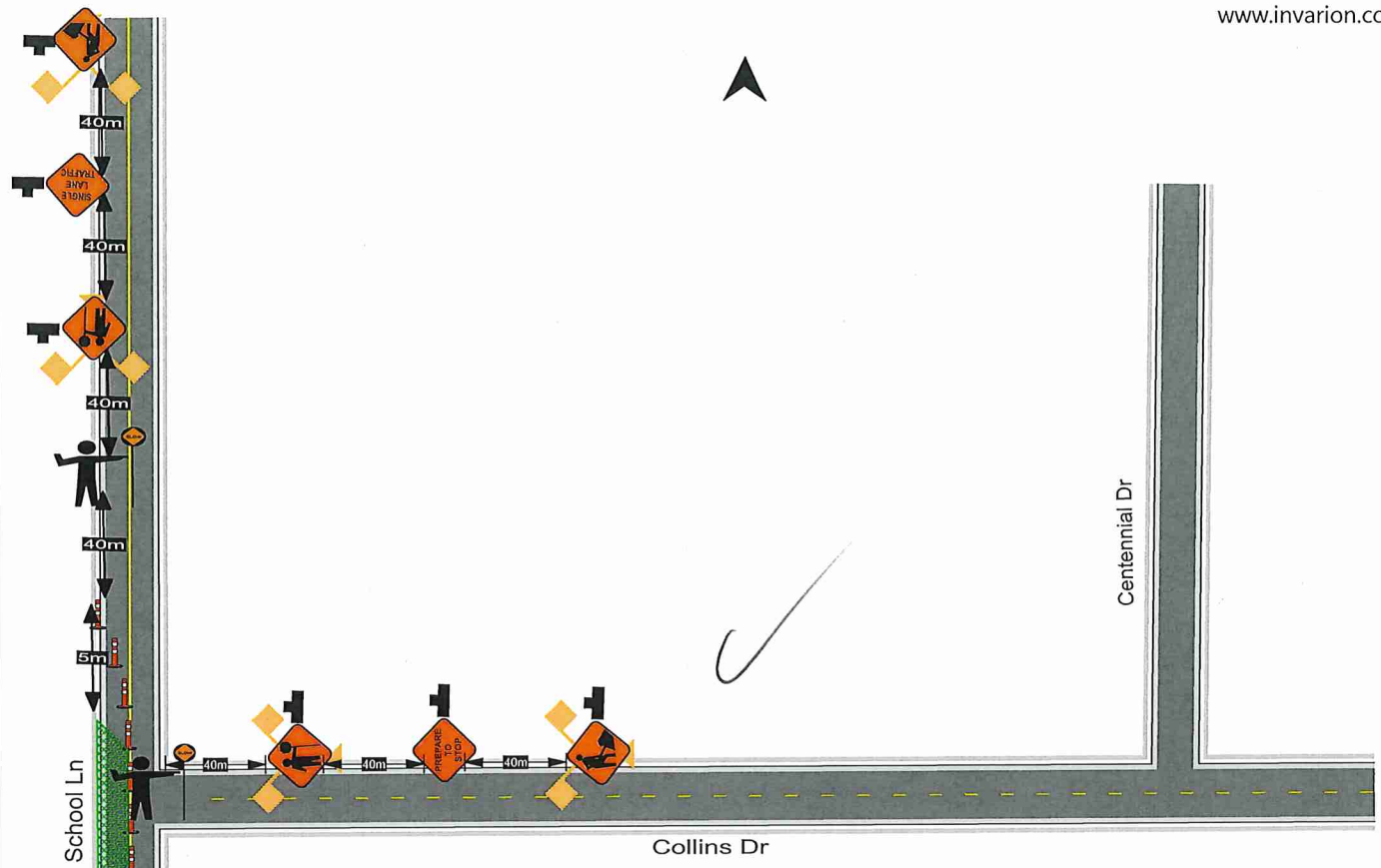
50-75m

40m

40m

40m

5m



LEGEND	
	Direction of Travel
	Sign
	North Arrow
	Tubular marker
	Certified TCP
	HLWD

Figure # 7.8 in the TCMWR 2015 Edition  
 Single Lane Alternating

This Traffic Control Plan is designed to accommodate patch work at 6840 School Ln through the Collins intersection on School Ln 25m South. Work to commence Friday, Aug. 17th, 2018 and is expected to be completed in one day, however permit will be requested for a week.

Work hours shall be from 7:00 am - 5:00 pm

All signs and traffic devices shall be placed in compliance with WCB and the TCMWR



RIGHT ON FLAGGING  
EST. 2014

---



LOWEN PAVING

Drawing NTS Drawing No. LP-School Ln - 01